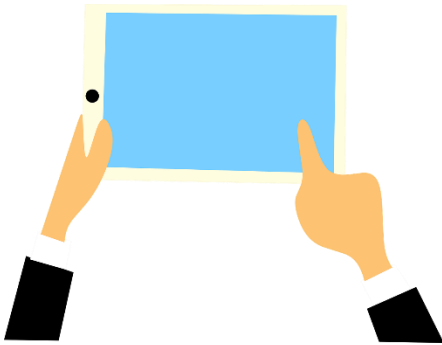


Functional Tips for ScanWorkX



This month’s tip for getting more from your ScanWorkX implementation!

ScanWorkX for D365 – Single User Session Parameter

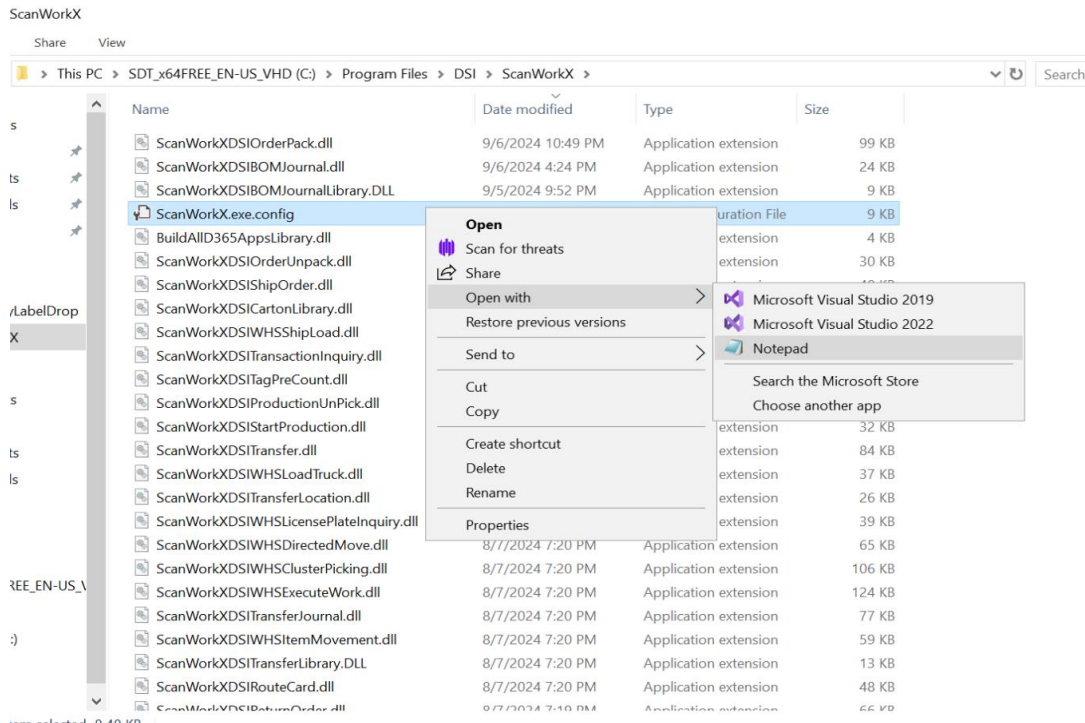
-By Harrison Brazelton

harrison.brazelton@cloudinventory.com

In today's newsletter, we'll cover the “Single User Session” parameter in the “ScanWorkX.exe.config” file and how it enables users to run multiple workflows simultaneously. For example, an employee using two applications can transfer inventory with one while continuing other tasks like picking, packing, or loading with the other. When this parameter is disabled, the user can open two ScanWorkX tabs, saving time by avoiding the need to constantly switch between applications.

Changing the value of the parameter

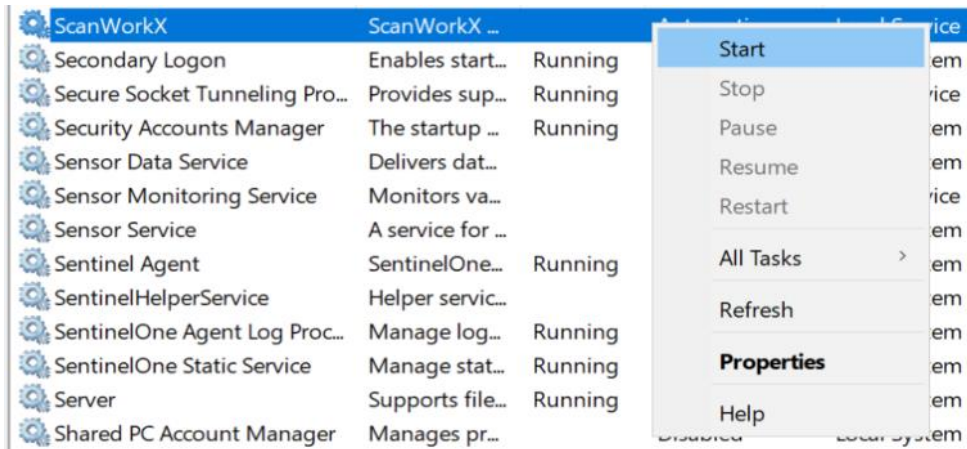
First, log in to the server hosting ScanWorkX, open the 'Services' app, and stop the ScanWorkX service. Then, locate the “ScanWorkX” folder and edit the “ScanWorkX.exe.config” file. By default, this folder is located at “C:\Program Files\DSI\ScanWorkX”.



Open the “ScanWorkX.exe.config” file with Notepad.

```
<add key="Single User Sessions" value="Y" />
```

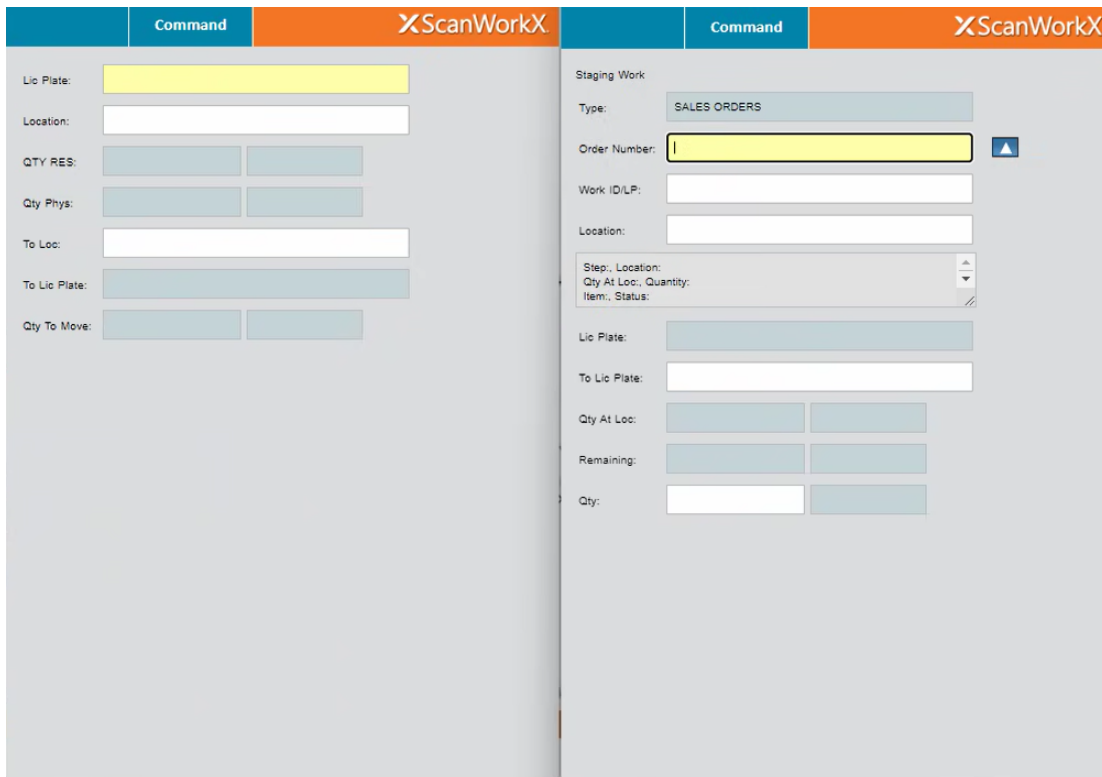
Change the key value from "Y" to "N". Save the updated file and exit Notepad.



After the config file has been edited and saved, go back to the Services application and start the ScanWorkX service again.

Simultaneous Workflow

Pictured below is an example of a tablet with two ScanWorkX tabs open at the same time. This is done by logging into ScanWorkX using two different sessions with the same username and password. Without the "Single User Sessions" parameter turned to "N", this would not be possible as the same user cannot be logged in more than once with this parameter set to "Y".



Benefits of this solution include no development cost to complete simultaneous workflows across multiple applications, and less time lost clicking menu items and navigating between applications. This time save can add up quickly when you have users who are already jumping between applications frequently to complete their tasks.

One 'con' to keep in mind is that the same user logged in for two or more sessions will be consuming two or more licenses. For example, if you were licensed for only two users but only one user is logged in across two tabs, you would already be at your license capacity of two users even though technically only one user is logged in. This is because we consume license counts based on the number of instances of ScanWorkX that is currently active, this is to prevent people from getting around our license count number having every worker use one SWX login. Because of this we recommend not to disable the 'Single User Session' parameter unless you are confident that you are licensed for more users than you are actively consuming on a day-to-day basis. It may only make sense to allow one or two workers who heavily use multiple applications to utilize this functionality to conserve your license counts.

Thank you for reading along and I hope this brief article can help you add more value to your ScanWorkX implementation! If you would like to know more about this parameter in ScanWorkX, have any questions/issues, or if you have an idea you think would be a beneficial addition to ScanWorkX please do not hesitate to reach out to us at harrison.brazelton@cloudinventory.com.